

The Mobility Project

Curated by Elly Clarke / Clarke Gallery

At Galerie Suvi Lehtinen, Novalisstrasse 7, 10115 Berlin

With work by Simon Clark, Elly Clarke, Enda O'Donoghue, Kerstin Honeit, plan b/Sophia New & Dan Belasco Rogers and Fedora Romita

25.06.2011-23.07.2011.

Open Tuesday-Saturday 12-18

Panel discussion: 20.07.2011

Vernissage: 24.06.2011

"Keep connected, you are never alone, never alone with a mobile phone in your pocket."¹

Over the last decade, particularly since the mass take-up of the mobile phone, the ever-increasing mobility - of people, goods, information and images - has radically altered the way we perceive, interpret, navigate and even describe the world. Notions of presence and absence, solitude and togetherness and even of geography are changing, as our personally tailored collections of contacts, communities, photos and politics are with us 24/7. The way we travel around the places we live in, and how we interact with others whilst we're there has a great impact on the way we understand not only where we are but also who we are. Communication and movement are, and always have been, closely linked, dictating the scope of our influence. But today, in a world where one tweeted photo can be seen across five continents within seconds, that influence can reach areas and cultures of which we have no concept.

Here, six projects present six different projections of mobility. From Simon Clark's epic cycle journey around the UK delivering postcards he picked up from the Galapagos Islands direct into people's hands to plan b's live redrawing of their GPS traces gathered over their past year in Berlin direct onto the gallery wall; from Enda O'Donoghue paintings created from low-res mobile phone photos found on the internet to Kerstin Honeit's multi-city performance-experiments where she instructs women to stand on the same area of pavement for fifteen minutes - and finally from Fedora Romita's audio recordings of the U-Bahn network of Berlin as a means of getting to know the city she just moved to, to my own five minute video showing an unexpected moment of stillness on the German autobahn - these are personal portraits of navigation. But, between them, they touch on wider issues that affect us all as we negotiate our way around the world - including gender, power, surveillance and the relationship between physical and virtual materiality.

Elly Clarke is an artist & curator based in Berlin and Birmingham, UK.

On 20th July at 7pm a panel discussion will take place in the gallery, featuring most of the artists in the show plus some invited guest speakers. Also on this night, a specially commissioned set of limited-edition prints by each of the artists will be launched and offered for sale both through the gallery and online. This exhibition will also in itself travel on; next stop is the UK.

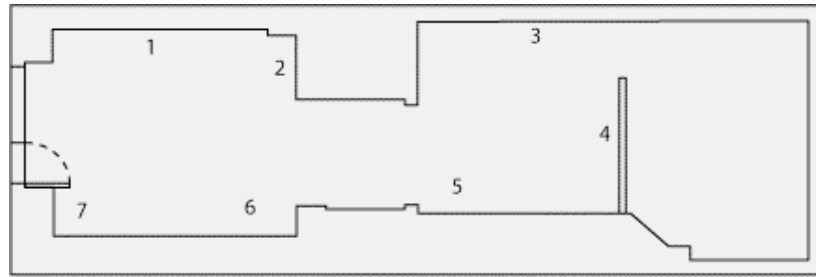
All work in this exhibition is for sale. Please enquire for a price list.

Clarke Gallery was set up by Elly Clarke in 2008 in her fourth floor, 2 room Hinterhaus apartment in Neukoelln. Following a total of ten exhibitions that took place there, Clarke Gallery become in itself mobile. Over the past year, Clarke Gallery show have travelled to Eastern Edge Gallery in St Johns, Newfoundland, Canada and to Franklin Furnace in New York, with plans for more to come. Please sign up to the Clarke Gallery mailing list to find out about an exhibition coming to a place near you, soon. www.clarkegallery.de/ mail@clarkegallery.de. Or join the group on Facebook.

Many thanks to Suvi Lehtinen, Nicole Rodriguez, Gilad Shachar, Henri Steeg, Linda Franke and Kym Ward.

¹ Excerpt from *Instantaneous Culture*, by Berlin band Theodor Storm.

Galerie Suvi Lehtinen was founded by Suvi Lehtinen in 2010. info@galerielehtinen.com / www.galerielehtinen.com



1. Enda O'Donoghue *"Black & White today"*, 2011 // Oil on Canvas, 12 Canvasses, each 30 x 40 cm // Enda O'Donoghue makes paintings from photographs that he finds on the Internet, but only after contacting the photographer of each image. The images he chooses are everyday throw-away snapshots which are low-res and pixilated. The painting process plays with these qualities and echoes the processes of digital image compression while allowing and inviting errors and glitches. It is interesting with these works the way the image is translated from photography to paint and ultimately through reproduction back to photography. When the paintings of photographs are photographed, they return to the look of low-res jpegs. It could be said, therefore, that these paintings are in some ways resistant to photography. // Enda O'Donoghue is based in Berlin.

2. Fedora Romita // *For Informational Purposes Only*, 2010/11 // CDs, headphones, mini cd players. // As a means of getting to know Berlin, Fedora Romita made audio recordings of the U and S Bahn lines she was using. Each recording begins with the artist's entry onto the train and ends only when she leaves, incorporating the announcements, conversations, conflicts and entertainment that occur as daily S + U-Bahn rituals. This is the first time this work has been exhibited and here she is exhibiting recordings from S1, U1 and S42. They are available to buy as limited edition artworks or as single mp3 track downloads, for 99c. // Fedora Romita is based in Berlin

3. Enda O'Donoghue // *"Too slutty?"*, 2010 // Oil on Canvas, 140 x 170 cm // endaism.com

4. Daniel Belasco Rogers and Sophia New / plan b // *All the Journeys we have made in Berlin in 2011* // 04.01.2011 – 23.06.2011 // Graphite on wall, 120cm x 134cm // Since 2003 and 2007 respectively, Daniel Belasco Rogers and Sophia New (plan b) have been tracing their mobility via GPS. Periodically they produce drawings of the cities they have spent the most time in. Peter Vasil writes software for them, the latest of which shows their traces in a split-screen animation, white lines against black. // For this exhibition plan b have made a durational performance that involved their redrawing of all their GPS traces gathered each day since the beginning of this current year in Berlin until the day they finished installing, direct onto the gallery wall, day by day in sequence. // Daniel Belasco Rogers and Sophia New are based in Berlin. // planbperformance.net

5. Kerstin Honeit // *Position #12008*, 2008 // Colour DVD with sound, projected. Edition of 5, 12' // Google-mapping

the neighbourhood of her studio, located in the Red Light District of Berlin in 2008, Kerstin Honeit made the connection that the digital reproduction of the earth via early Google maps works very much like the beginnings of photography: only things that do not move are captured. In terms of the streets of the Red Light District, this meant that the only people who were visible were the female sex-workers waiting for their next client. From this, Honeit set up a series of investigations about what it means in general for women to claim a pitch in urban space, simply by standing in the street. A long-term project, taking place in different cities, Honeit asks women to stand in the street for fifteen minutes at a time, without leaving their spot. These performances are documented via a hidden camera to catch the response of the street audience. // Kerstin Honeit is based in Berlin. // kerstinhoneit.com

6. Simon Clark // *Postcard Project (working title)* // Mixed media, 2007 – ongoing // Simon Clark travelled to Floreana, one of the Galapagos Islands, after taking part in an art residency in Ecuador. In previous centuries Floreana provided safe anchorage and a plentiful food supply for the buccaneers and whalers who sailed the Pacific. A unique tradition developed on the island, whereby passing seafarers would leave their letters and correspondence in a barrel lying on the beach. Subsequent travellers would then sort through the barrel and hand deliver any items that were addressed to their next port of call. In this way an informal but free postal service was established, and the stretch of beach became known as Post Office Bay. An old barrel mounted on a pole still functions as an improvised letterbox on the island. A remnant of the tradition encourages visitors to place postcards without any postage into the barrel, and to then pick up any postcards that are addressed to destinations they will subsequently be travelling to. In February 2007 Simon found 22 postcards at Post Office Bay that had been addressed to various locations around UK. Two and a half years later he delivered them in a single journey across the British Isles, travelling by train and by bicycle. // Simon Clark is based in London.

7. Elly Clarke // *Five Minutes on the A23 (Berlin-Heide)*, 2009 // Colour DVD with sound, Edition of 5, 5'17" // A portrait of a rare moment of stillness on a site usually reserved for high-speed travel. All sound is as recorded on site. // Elly Clarke is based in Berlin and Birmingham. // ellyclarke.com